

How to Repair airbag for Land Rover Aurora 2014

Car type: 14 years Land Rover Aurora

Airbag No: DK62-14D374-AG

Steps are as follows:

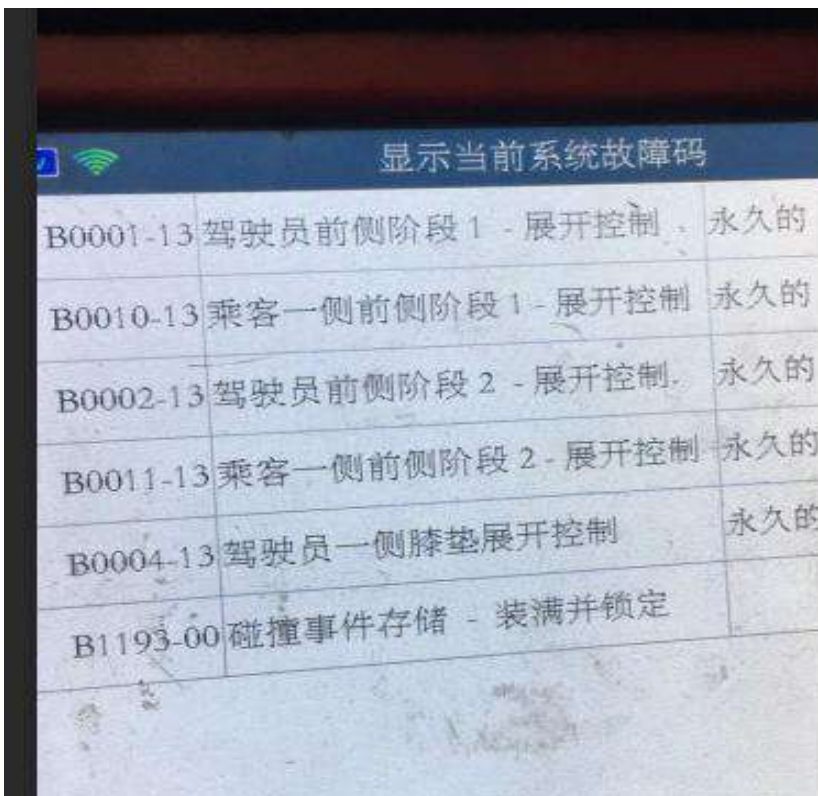
1. Check the vehicle.



2. The airbag lights on all the time.



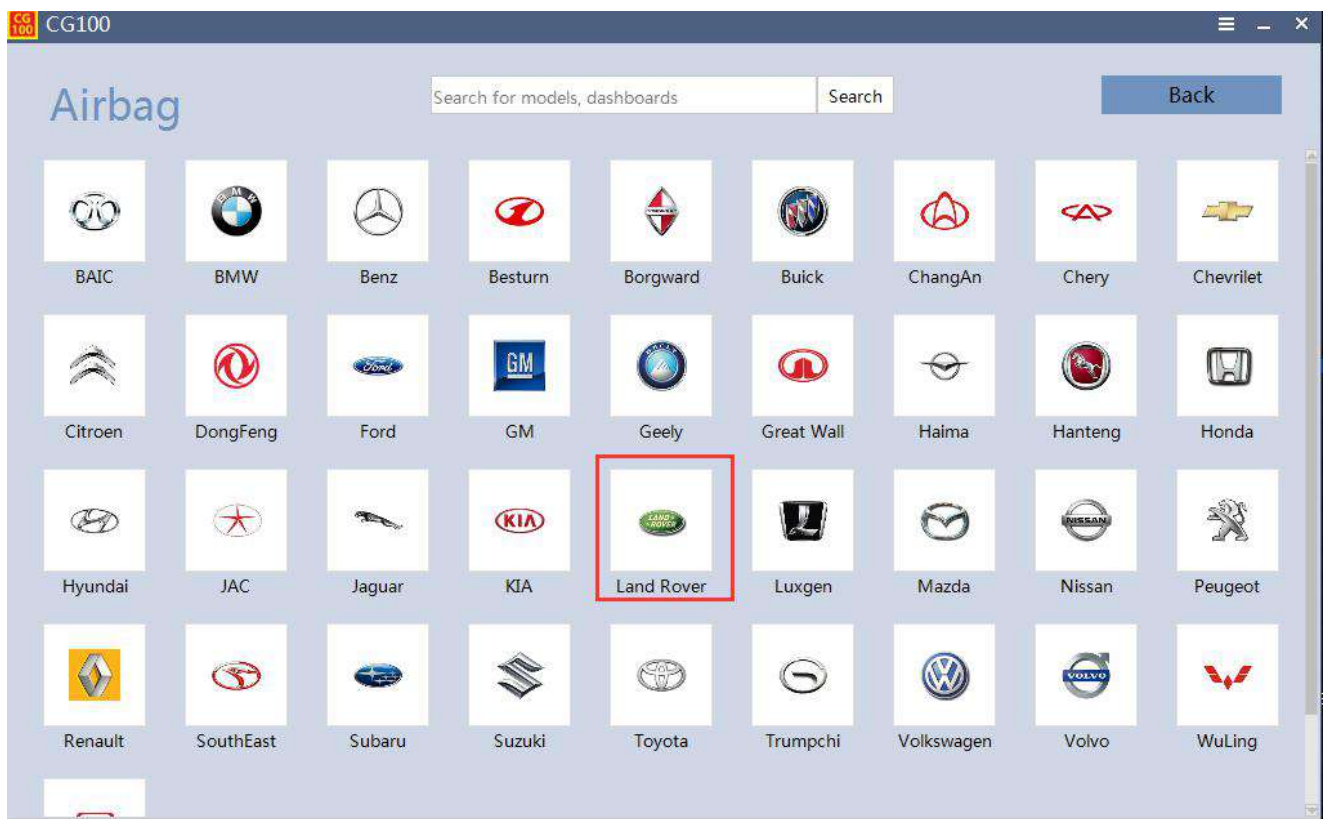
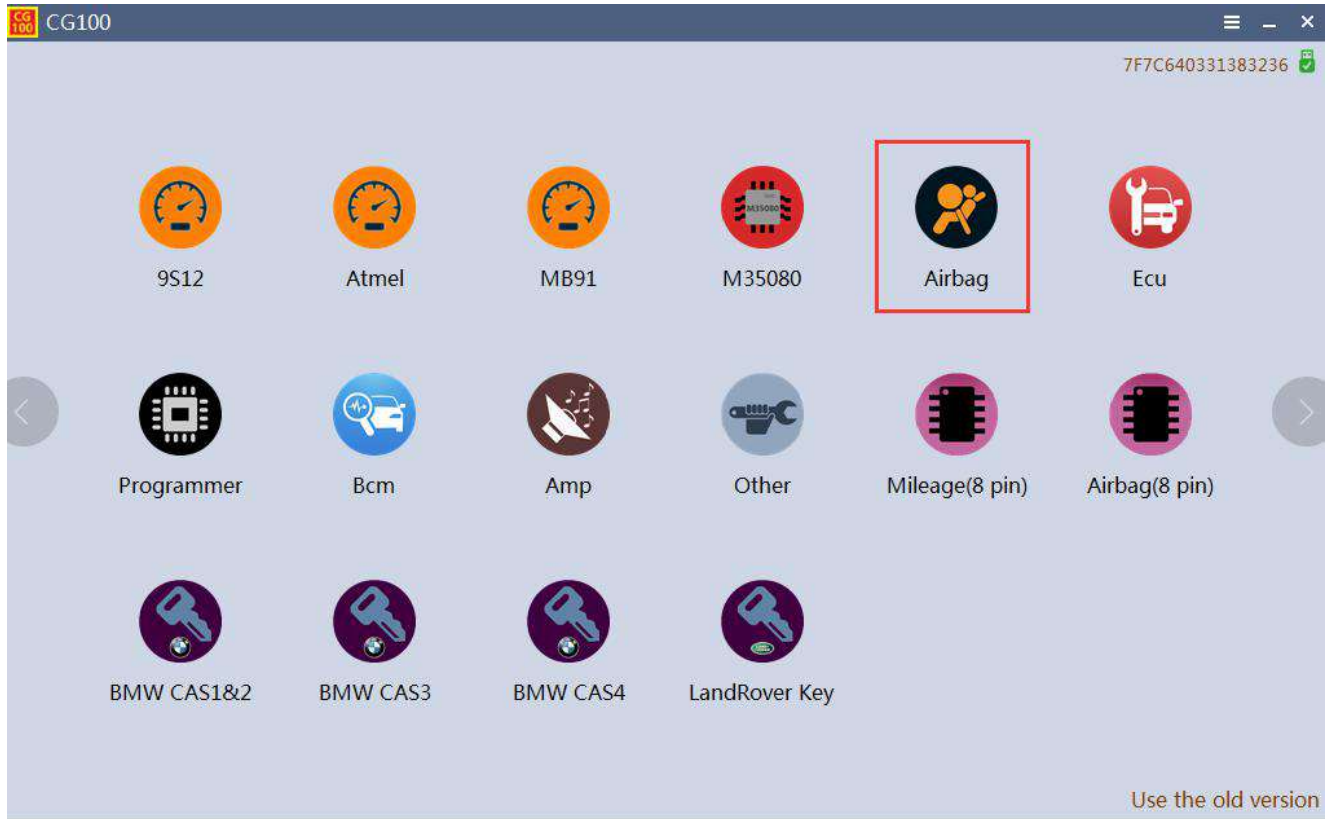
3. Access professional decoder detection and clear the DTC.

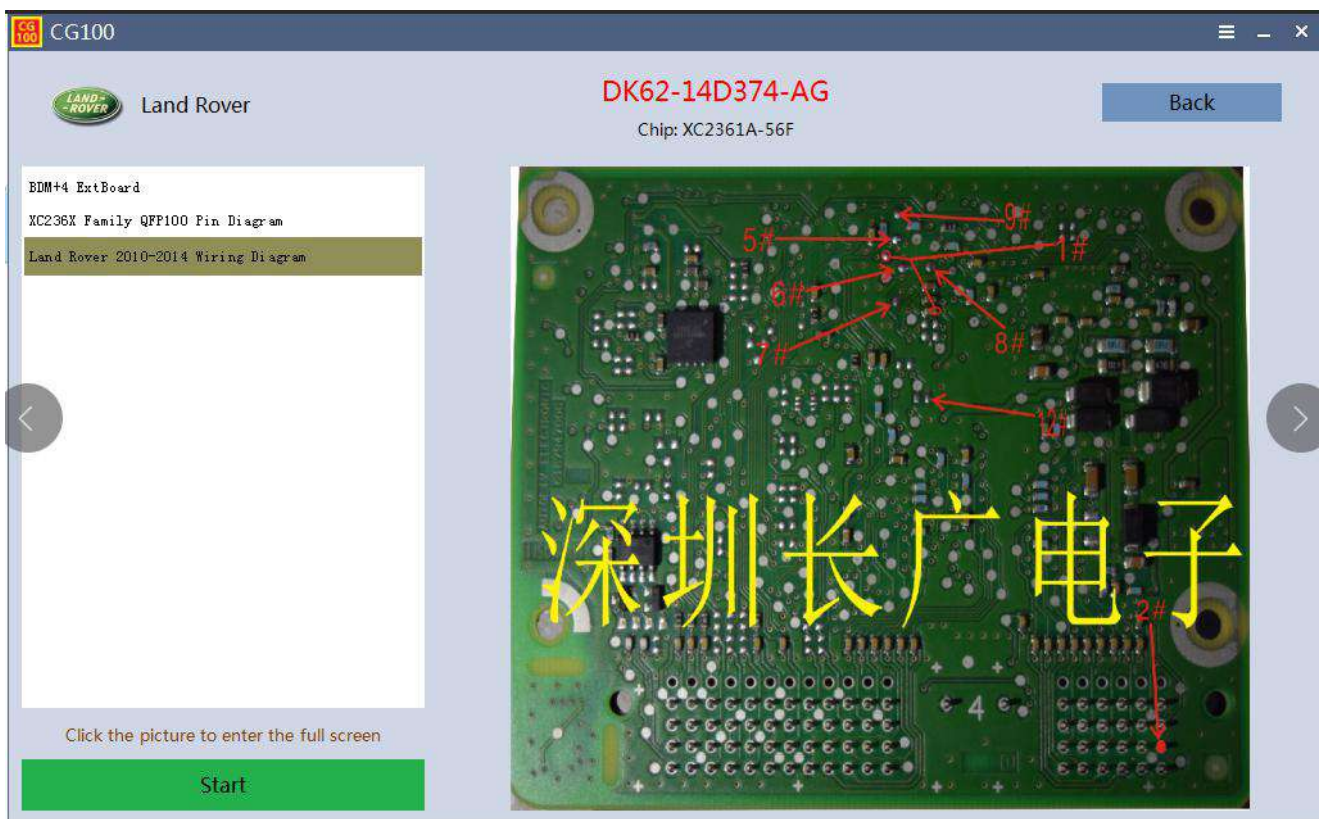
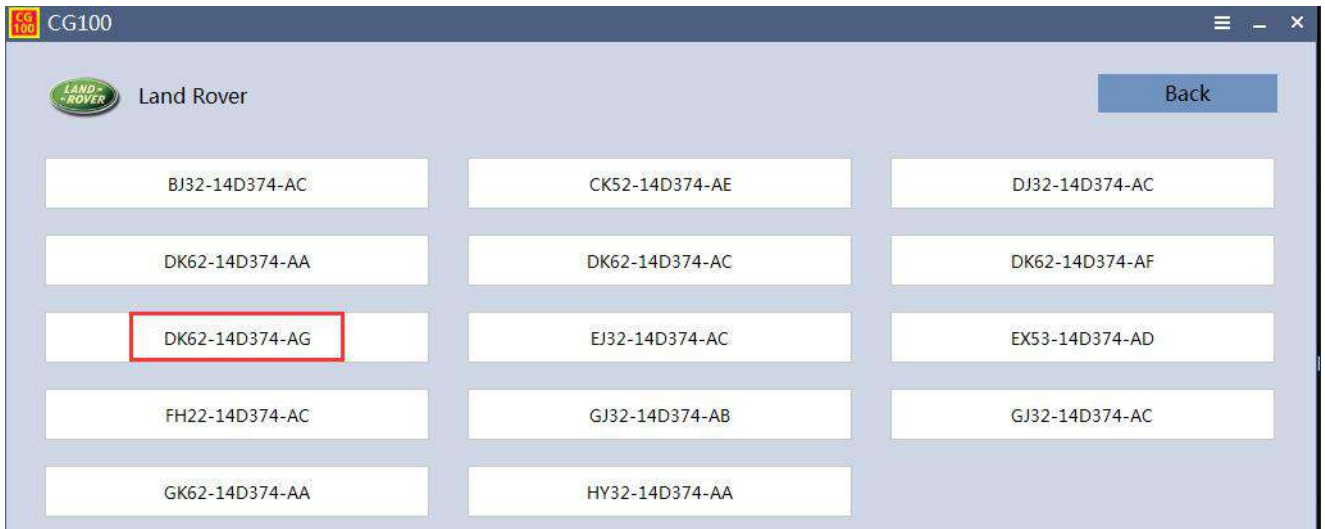


4. Disassemble the car, find the airbag computer board, confirm the chip.

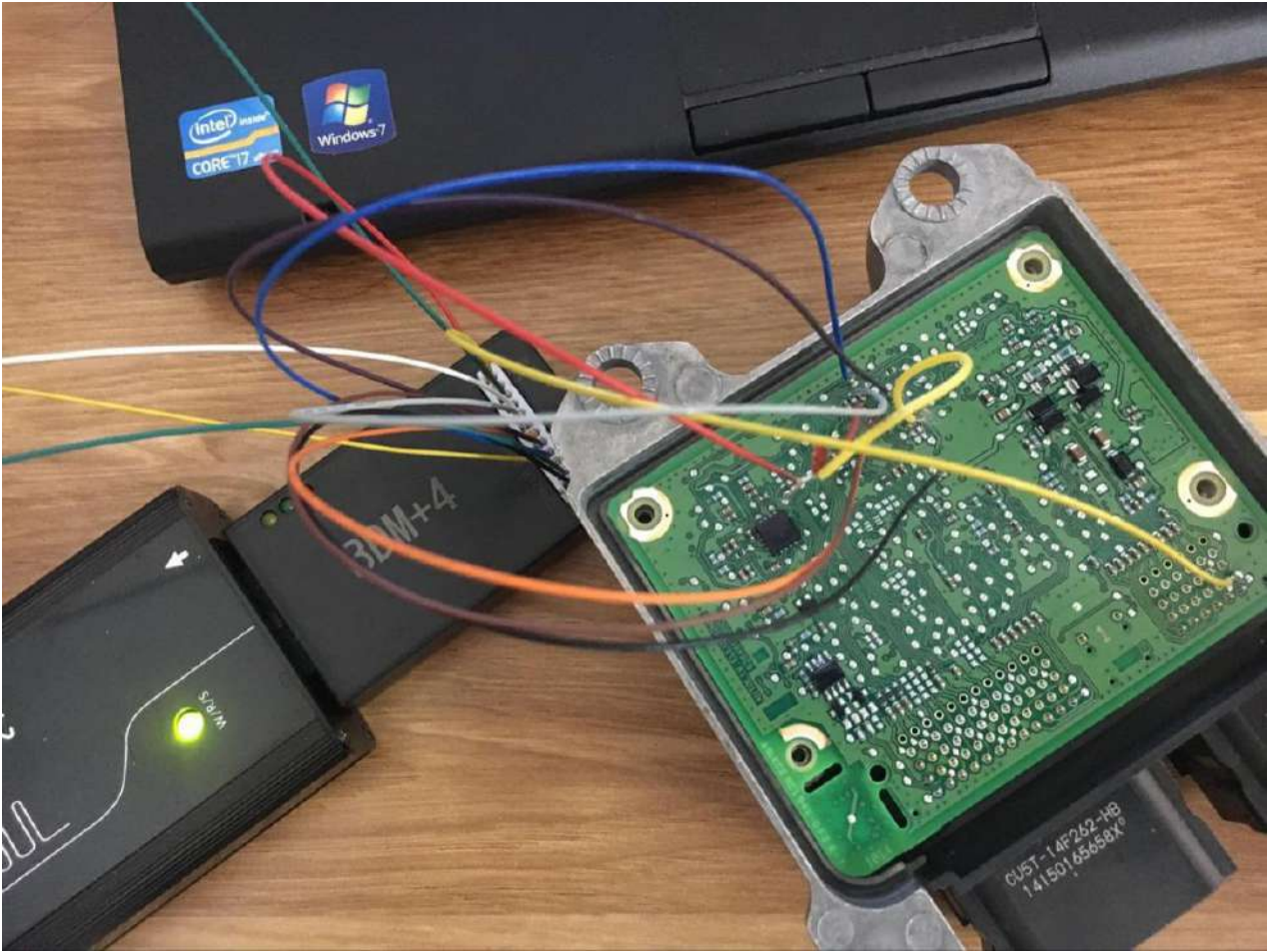


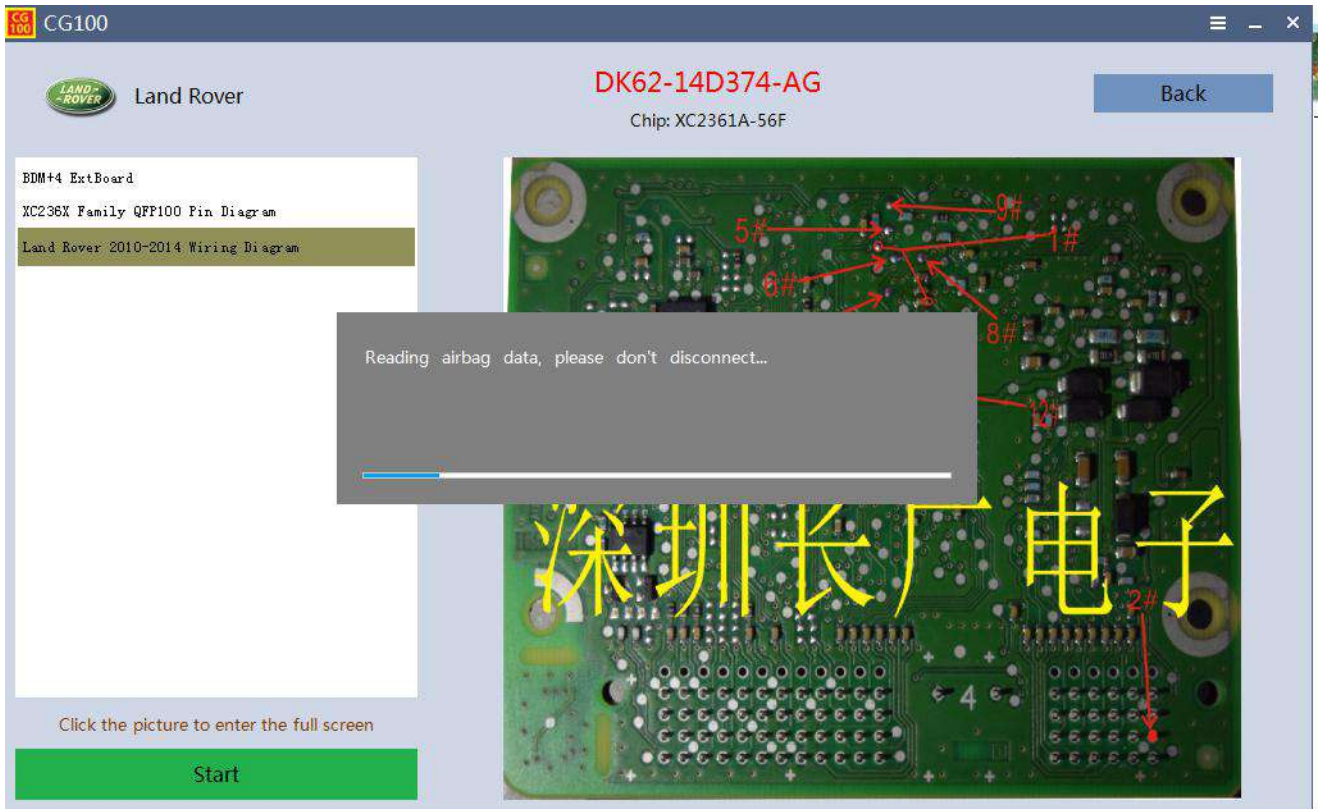
5. Open the software, enter the corresponding operation interface, find the physical wiring diagram.



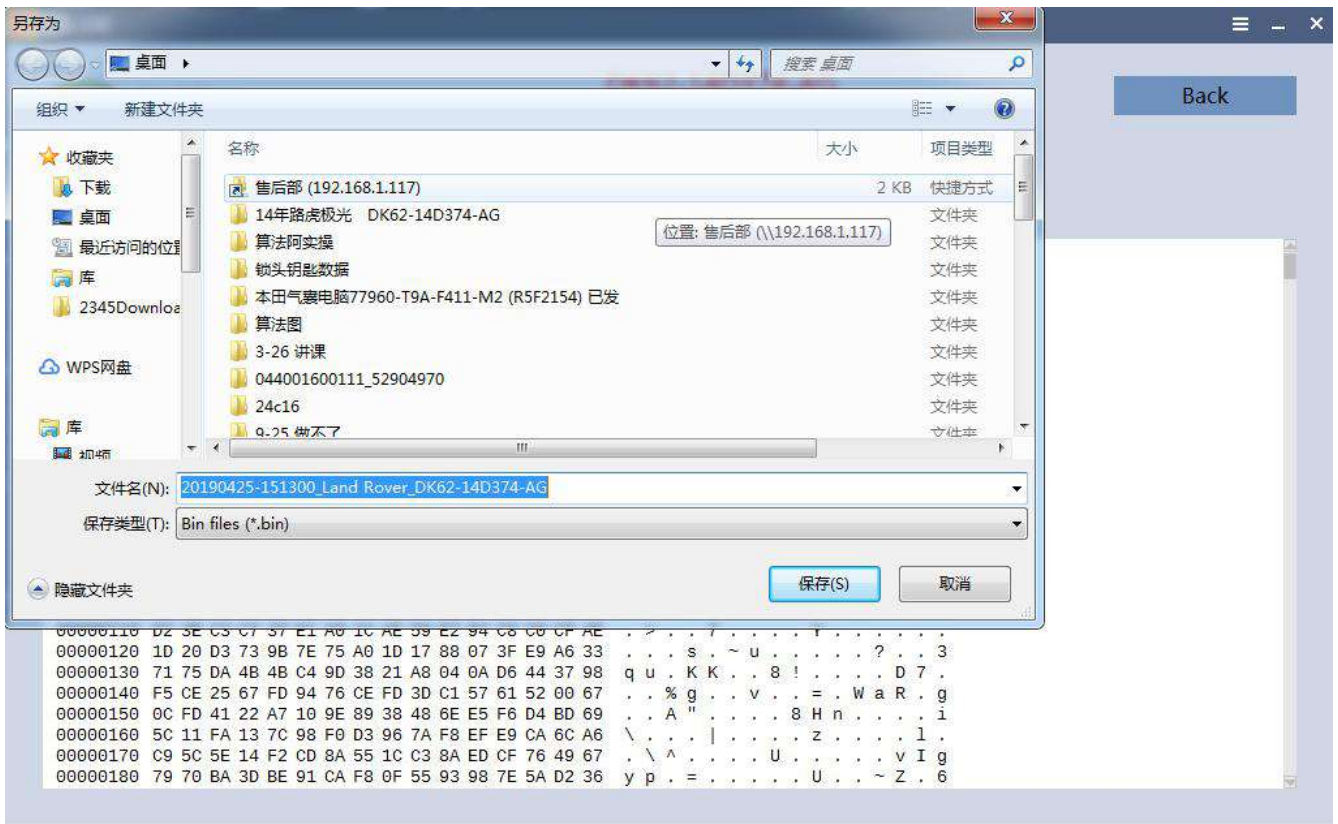


6. Perform physical wiring in a no-current environment and confirm that it is correct before powering on. After reading the data, please save the original data! If the software supports automatic repair, please repair it at the prompt of the software; if the software does not support repair temporarily, please select the custom operation, the first time consult the manufacturer's technical staff (QQ: 800163968), complete the operation under the direction of the manufacturer's technical staff.





(Note: Please do not touch any cables when it is reading.)



CG100 Land Rover DK62-14D374-AG Chip: XC2361A-56F

Open Save Read Write

Save file successfully!

确定

Address	Hex	ASCII
00000000	CB 6B F3 14 B2 44 F8 8E E6 00 FB 20 A1 C2 21 AA	. k . . . D ! .
00000010	4F 11 65 8A E8 DB 8D C0 7C BA 5D 50 10 75 0A E8	0 . e] P . u . .
00000020	A8 CA F2 C3 A5 6B 89 CD 51 46 97 08 B9 09 A1 2E k . . . Q F
00000030	BB E6 A4 98 5F 94 0A 5E 6B 96 D6 C0 31 BF 1 . " .
00000040	AC F6 CB 21 CB 37 6B 5C 0D DA 87 31 4E 18 1 N . . 5
00000050	E1 CB F2 B9 DE 75 4A F0 BD 84 58 55 24 D4 X U \$. . G
00000060	FE 76 E8 F6 CD B0 84 83 41 44 35 63 09 F5 A D 5 c . . F .
00000070	E9 48 B7 B4 0D 88 36 BE 9D 0C 4B D6 91 BD K
00000080	C7 D2 AF 0A 52 DE BD 8A 16 0D 07 66 92 AA f . . . ; .
00000090	FC E5 5C 52 93 D4 B6 10 31 B7 17 0C 1F 80 L <]
000000A0	2E 93 8A 25 03 CA FF B8 B3 BC 67 01 90 3F g . . . ? . "
000000B0	42 2B 47 5B 19 61 B3 2D A1 0C 24 BF 77 27 \$. w ' < .
000000C0	5C 40 E0 0E 88 7B 30 57 40 D9 BC FE AB BA
000000D0	E2 A1 E1 97 46 38 13 5E 16 94 DB B6 41 B9 A . . . i
000000E0	78 61 18 8E 88 F9 39 AD E7 ED 6E 23 8C 25 88 C7	x a 9 . . . n # . % . .
000000F0	04 D0 92 CD C3 60 C0 EB B8 D5 A2 BB 24 3F 9D 61 \$? . a
00000100	AB 7E 9C 6D AC 4D 03 03 CE 7F E5 39 DB 87 76 C0 ~ . m . M 9 . . v .
00000110	D2 3E C3 C7 37 E1 A0 1C AE 59 E2 94 C8 C0 CF AE > . . 7 Y
00000120	1D 20 D3 73 9B 7E 75 A0 1D 17 88 07 3F E9 A6 33 s . ~ u ? . . 3
00000130	71 75 DA 4B 4B C4 9D 38 21 A8 04 0A D6 44 37 98	q u . K K . . 8 ! D 7 .
00000140	F5 CE 25 67 FD 94 76 CE FD 3D C1 57 61 52 00 67	. . . % g . . v . . = . W a R . g
00000150	0C FD 41 22 A7 10 9E 89 38 48 6E E5 F6 D4 BD 69	. . . A " 8 H n i
00000160	5C 11 FA 13 7C 98 F0 D3 96 7A F8 EF E9 CA 6C A6	\ z 1 .
00000170	C9 5C 5E 14 F2 CD 8A 55 1C C3 8A ED CF 76 49 67	. \ ^ U v I g
00000180	79 70 BA 3D BE 91 CA F8 0F 55 93 98 7E 5A D2 36	y p . = U . . . ~ Z . 6

CG100 Land Rover DK62-14D374-AG Chip: XC2361A-56F

Open Save Read Write

Whether it is repaired

是(Y) 否(N)

Address	Hex	ASCII
00000000	CB 6B F3 14 B2 44 F8 8E E6 00 FB 20 A1 C2 21 AA	. k . . . D ! .
00000010	4F 11 65 8A E8 DB 8D C0 7C BA 5D 50 10 75 0A E8	0 . e] P . u . .
00000020	A8 CA F2 C3 A5 6B 89 CD 51 46 97 08 B9 09 A1 2E k . . . Q F
00000030	BB E6 A4 98 5F 94 0A 5E 6B 96 D6 C0 31 BF 1 . " .
00000040	AC F6 CB 21 CB 37 6B 5C 0D DA 87 31 4E 18 1 N . . 5
00000050	E1 CB F2 B9 DE 75 4A F0 BD 84 58 55 24 D4 X U \$. . G
00000060	FE 76 E8 F6 CD B0 84 83 41 44 35 63 09 F5 A D 5 c . . F .
00000070	E9 48 B7 B4 0D 88 36 BE 9D 0C 4B D6 91 BD K
00000080	C7 D2 AF 0A 52 DE BD 8A 16 0D 07 66 92 AA f . . . ; .
00000090	FC E5 5C 52 93 D4 B6 10 31 B7 17 0C 1F 80 L <]
000000A0	2E 93 8A 25 03 CA FF B8 B3 BC 67 01 90 3F g . . . ? . "
000000B0	42 2B 47 5B 19 61 B3 2D A1 0C 24 BF 77 27 \$. w ' < .
000000C0	5C 40 E0 0E 88 7B 30 57 40 D9 BC FE AB BA
000000D0	E2 A1 E1 97 46 38 13 5E 16 94 DB B6 41 B9 A . . . i
000000E0	78 61 18 8E 88 F9 39 AD E7 ED 6E 23 8C 25 88 C7	x a 9 . . . n # . % . .
000000F0	04 D0 92 CD C3 60 C0 EB B8 D5 A2 BB 24 3F 9D 61 \$? . a
00000100	AB 7E 9C 6D AC 4D 03 03 CE 7F E5 39 DB 87 76 C0 ~ . m . M 9 . . v .
00000110	D2 3E C3 C7 37 E1 A0 1C AE 59 E2 94 C8 C0 CF AE > . . 7 Y
00000120	1D 20 D3 73 9B 7E 75 A0 1D 17 88 07 3F E9 A6 33 s . ~ u ? . . 3
00000130	71 75 DA 4B 4B C4 9D 38 21 A8 04 0A D6 44 37 98	q u . K K . . 8 ! D 7 .
00000140	F5 CE 25 67 FD 94 76 CE FD 3D C1 57 61 52 00 67	. . . % g . . v . . = . W a R . g
00000150	0C FD 41 22 A7 10 9E 89 38 48 6E E5 F6 D4 BD 69	. . . A " 8 H n i
00000160	5C 11 FA 13 7C 98 F0 D3 96 7A F8 EF E9 CA 6C A6	\ z 1 .
00000170	C9 5C 5E 14 F2 CD 8A 55 1C C3 8A ED CF 76 49 67	. \ ^ U v I g
00000180	79 70 BA 3D BE 91 CA F8 0F 55 93 98 7E 5A D2 36	y p . = U . . . ~ Z . 6

CG100 Land Rover DK62-14D374-AG Chip: XC2361A-56F

Open Save Read Write

```

----- [0][1][2][3][4][5][6][7][8][9][A][B][C][D][E][F] 0 1 2 3 4 5 6 7 8 9 A B C D E F
00000000 CB 6B F3 14 B2 44 F8 8E E6 00 FB 20 A1 C2 21 AA . k . . . . D . . . . . ! .
00000010 4F 11 65 8A E8 DB 8D C0 7C BA 5D 50 10 75 0A E8 0 . e . . . . | . ] P . u . .
00000020 A8 CA F2 C3 A5 6B 89 CD 51 46 97 08 B9 09 A1 2E . . . . k . . . . Q F . . . . 1 . "
00000030 BB E6 A4 98 5F 94 0A 5E 6B 96 D6 C0 31 BF 22 0F . . . . k . . . . Q F . . . . 1 . "
00000040 AC F6 CB 21 CB 37 6B 5C 0D DA 87 31 4E 18 . . . . . i N . . . . 5
00000050 E1 CB F2 B9 DE 75 4A F0 BD 84 58 55 24 D4 . . . . . X U $ . . . . 6
00000060 FE 76 E8 F6 CD B0 84 83 41 44 35 63 09 F5 . . . . . A D 5 c . . . . F
00000070 E9 48 B7 B4 0D 88 36 BE 9D 0C 4B D6 91 BD . . . . . K . . . . .
00000080 C7 D2 AF 0A 52 DE BD 8A 16 0D 07 66 92 AA . . . . . f . . . . ; .
00000090 FC E5 5C 52 93 D4 B6 10 31 B7 17 0C 1F 80 . . . . . < ] . . . . .
000000A0 2E 93 8A 25 03 CA FF B8 B3 BC 67 01 90 3F . . . . . g . . . . ? . "
000000B0 42 2B 47 5B 19 61 B3 2D A1 0C 24 BF 77 27 . . . . . $ . w ' < .
000000C0 5C 40 E0 0E 88 7B 30 57 40 D9 BC FE AB BA . . . . . . . . . . .
000000D0 E2 A1 E1 97 46 38 13 5E 16 94 DB 86 41 B9 . . . . . . . . . . . A . . . i
000000E0 78 61 18 8E 88 F9 39 AD E7 ED 6E 23 8C 25 88 C7 x a . . . . 9 . . . . n # . % . .
000000F0 04 D0 92 CD C3 60 C0 EB B8 D5 A2 BB 24 3F 9D 61 . . . . . m M . . . . 9 . . . v
00000100 AB 7E 9C 6D AC 4D 03 03 CE 7F E5 39 DB 87 76 C0 . . . . . > . 7 . . . . Y . . . .
00000110 D2 3E C3 C7 37 E1 A0 1C AE 59 E2 94 C8 C0 CF AE . . . . . s . ~ u . . . . ? . 3
00000120 1D 20 D3 73 9B 7E 75 A0 1D 17 88 07 3F E9 A6 33 . . . . . q u . K K . . 8 ! . . . . D 7 .
00000130 71 75 DA 4B 4B C4 9D 38 21 A8 04 0A D6 44 37 98 . . . . . % g . . . v . . = . W a R . g
00000140 F5 CE 25 67 FD 94 76 CE FD 3D C1 57 61 52 00 67 . . . . . A " . . . . 8 H n . . . . i
00000150 0C FD 41 22 A7 10 9E 89 38 48 6E E5 F6 D4 BD 69 . . . . . \ . . . | . . . . z . . . . l .
00000160 5C 11 FA 13 7C 98 F0 D3 96 7A F8 EF E9 CA 6C A6 . . . . . \ ^ . . . . U . . . . v I g
00000170 C9 5C 5E 14 F2 CD 8A 55 1C C3 8A ED CF 76 49 67 . . . . . y p . = . . . . U . . . ~ Z . 6
00000180 79 70 BA 3D BE 91 CA F8 0F 55 93 98 7E 5A D2 36

```

The airbag is being repaired, please don't disconnect...

CG100 Land Rover DK62-14D374-AG Chip: XC2361A-56F

Open Save Read Write

```

----- [0][1][2][3][4][5][6][7][8][9][A][B][C][D][E][F] 0 1 2 3 4 5 6 7 8 9 A B C D E F
00000000 CB 6B F3 14 B2 44 F8 8E E6 00 FB 20 A1 C2 21 AA . k . . . . D . . . . . ! .
00000010 4F 11 65 8A E8 DB 8D C0 7C BA 5D 50 10 75 0A E8 0 . e . . . . | . ] P . u . .
00000020 A8 CA F2 C3 A5 6B 89 CD 51 46 97 08 B9 09 A1 2E . . . . k . . . . Q F . . . . 1 . "
00000030 BB E6 A4 98 5F 94 0A 5E 6B 96 D6 C0 31 BF 22 0F . . . . k . . . . Q F . . . . 1 . "
00000040 AC F6 CB 21 CB 37 6B 5C 0D DA 87 31 4E 18 . . . . . i N . . . . 5
00000050 E1 CB F2 B9 DE 75 4A F0 BD 84 58 55 24 D4 . . . . . X U $ . . . . 6
00000060 FE 76 E8 F6 CD B0 84 83 41 44 35 63 09 F5 . . . . . A D 5 c . . . . F
00000070 E9 48 B7 B4 0D 88 36 BE 9D 0C 4B D6 91 BD . . . . . K . . . . .
00000080 C7 D2 AF 0A 52 DE BD 8A 16 0D 07 66 92 AA . . . . . f . . . . ; .
00000090 FC E5 5C 52 93 D4 B6 10 31 B7 17 0C 1F 80 . . . . . < ] . . . . .
000000A0 2E 93 8A 25 03 CA FF B8 B3 BC 67 01 90 3F . . . . . g . . . . ? . "
000000B0 42 2B 47 5B 19 61 B3 2D A1 0C 24 BF 77 27 . . . . . $ . w ' < .
000000C0 5C 40 E0 0E 88 7B 30 57 40 D9 BC FE AB BA . . . . . . . . . . .
000000D0 E2 A1 E1 97 46 38 13 5E 16 94 DB 86 41 B9 . . . . . . . . . . . A . . . i
000000E0 78 61 18 8E 88 F9 39 AD E7 ED 6E 23 8C 25 88 C7 x a . . . . 9 . . . . n # . % . .
000000F0 04 D0 92 CD C3 60 C0 EB B8 D5 A2 BB 24 3F 9D 61 . . . . . m M . . . . 9 . . . v
00000100 AB 7E 9C 6D AC 4D 03 03 CE 7F E5 39 DB 87 76 C0 . . . . . > . 7 . . . . Y . . . .
00000110 D2 3E C3 C7 37 E1 A0 1C AE 59 E2 94 C8 C0 CF AE . . . . . s . ~ u . . . . ? . 3
00000120 1D 20 D3 73 9B 7E 75 A0 1D 17 88 07 3F E9 A6 33 . . . . . q u . K K . . 8 ! . . . . D 7 .
00000130 71 75 DA 4B 4B C4 9D 38 21 A8 04 0A D6 44 37 98 . . . . . % g . . . v . . = . W a R . g
00000140 F5 CE 25 67 FD 94 76 CE FD 3D C1 57 61 52 00 67 . . . . . A " . . . . 8 H n . . . . i
00000150 0C FD 41 22 A7 10 9E 89 38 48 6E E5 F6 D4 BD 69 . . . . . \ . . . | . . . . z . . . . l .
00000160 5C 11 FA 13 7C 98 F0 D3 96 7A F8 EF E9 CA 6C A6 . . . . . \ ^ . . . . U . . . . v I g
00000170 C9 5C 5E 14 F2 CD 8A 55 1C C3 8A ED CF 76 49 67 . . . . . y p . = . . . . U . . . ~ Z . 6
00000180 79 70 BA 3D BE 91 CA F8 0F 55 93 98 7E 5A D2 36

```

CG100

Repairing succeeded

确定

7. After the repair is completed, please put the airbag computer board back to car. Connect Land Rover special inspection SDD detection, it did not show any DTC.



8. The airbag light is off.



9. The airbag repaired successfully!!

Technical support Whatsapp: +8613500065304

Official website: WWW.CGPROGCAR.COM.